



EXCELLENCE • LEARNING • LEADERSHIP

Sixth Form Prospectus

September 2019 - July 2020



We are a unique community where learning and leadership ensure excellence for all

Principal's Welcome



EXCELLENCE • LEARNING • LEADERSHIP

Dear Parents,

Welcome to King Richard School. We are a caring, friendly and ambitious 11-18 comprehensive school serving the military communities of the Eastern Sovereign Base Area, Cyprus.

Whether a student is with us for all their secondary education or a shorter period we will work enterprisingly to develop them personally, socially and academically. We have outstanding resources for our young people:-

- Highly qualified, UK trained specialist staff
- Excellent pupil:teacher ratios
- Attractive, well appointed buildings
- Excellent teaching and learning resources, including enviable ICT facilities and support
- Wide ranging, quality curricular and extra curricular provision

Key to our students' success is a positive and productive relationship between home and school. Together we can make an immense difference to our children's futures. If you need to talk to us we encourage you to do this sooner rather than later. We have well developed pastoral/support systems ensuring whatever the situation or eventuality we can respond quickly.

Our core values of 'Excellence, Learning and Leadership' underpin all that we do and we aim to ensure that learning is outstanding in every lesson, every day. We strongly believe that every learner has a key role to play in their own success and as such we expect our students to work to their maximum potential in a respectful and mature manner.

I look forward to meeting you in the future and if I or any of the staff can help please phone on 00357 2474 8340 or email on enquiries@kingrichardschoolcyprus.com

Yours faithfully,

Richard Sproson
Principal, rsproson@kingrichardschoolcyprus.com



Mr C Balmer - Head of Sixth Form Welcome

Welcome to the exciting range of subjects and learning opportunities which await you if you make the decision to join us at KRS Sixth Form. You are about to enter a very exciting stage in your education and we are sure you will find this a useful guide to help you make the right decision. Young people who join our Sixth Form benefit from all the opportunities that come from being part of a small and successful Sixth Form. There are many additional opportunities to develop leadership, to volunteer and to enhance your employability. If after reading this information you have any further questions please do not hesitate to contact me on 00357 2474 8340 or email on cbalmer@kingrichardschoolcyprus.com.

Statement of Entitlement



EXCELLENCE • LEARNING • LEADERSHIP

King Richard School offers:

- A range of A2 courses
- A range of vocational courses
- A regular review of progress involving teachers, students and parents
- A supportive tutorial system for each student
- Careers advice and guidance
- Access to study room areas
- Fantastic computer and internet facilities
- A fully equipped Learning Resource Centre
- Opportunities for Work Related Learning
- Opportunities in Music, Drama and Sport
- Leadership and responsibility opportunities within the school environment including Head of House and Deputy Head of House
- Involvement with the Model United Nations (debating)
- Opportunities to be involved in the Federated Pupil Leadership Team
- A wide and varied Post-16 experience for all students



Broaden your Horizons

Alongside your academic courses you will be expected to take the opportunity to broaden your horizons through a range of additional activities. We have expanded our enrichment programme this year to give you the opportunity to develop new skills and interests. One hour per week will be timetabled for enrichment activities as well as some out of hours time. Once you have opted for a course you will be expected to show commitment and attend every session. We currently offer a range of courses that enrich your experience at KRS.

- Paired Reading Scheme
- Extended Project Qualification
- Model United Nations (debating)
- Level 2 CACHE qualification
- Sports teams
- Fitness training
- Survival Cookery
- Charity work
- Drama productions
- School Band
- Learn a new musical instrument
- Opportunities for work related learning



What is on offer?



EXCELLENCE • LEARNING • LEADERSHIP

What courses should you take?

This will depend upon your actual GCSE/BTEC results and you will have been guided to a particular pathway during meetings. A minimum of 5 Level 9-5 at GCSE, usually to include English and Mathematics is required. Choosing the correct course is an important decision and one you should make very carefully. You should seek guidance and listen to all the advice you are given.

Pathway 1 4 Level 3 courses (those with level 7,8,9 only).

Pathway 2 3 Level 3 courses (level 5,6,7) or an AS if subjects are offering this and the student is capable.

Pathway 3- Foundation year (those that have not achieved 5 level 5-9) to include GCSE resit. There could be the opportunity to study one Level 3 subject but will be on a case by case basis.

All pathways have the ability to be bespoke in terms of using 14-19 funding to cater for the individual needs of a student. This can be through an external providers if necessary or to bring a specialist in for a specific niche.

Please do not hesitate to contact the Sixth Form Office on ex 8360 if you have any queries or would like to discuss studying at KRS Sixth Form.

A Level courses

We offer a variety of Advanced (Level 3) courses and you can read about them in a lot more detail later in this prospectus. You must make sure you have the grade requirements before deciding if this path is for you.

Vocational courses

We offer a limited range of Advanced (Level 3) Vocational courses. Again your GCSE/BTEC grades will help to decide if these courses are for you. The exact detail and content of these courses varies annually so please contact the school for details of what's currently on offer.

Can I chose any subject?

Due to the small size of King Richard School, we aim to give personalised timetables to each individual student. This means that students can choose any of the subjects we offer and we will do our best to fit these into the school timetable.



Our Expectations



EXCELLENCE • LEARNING • LEADERSHIP

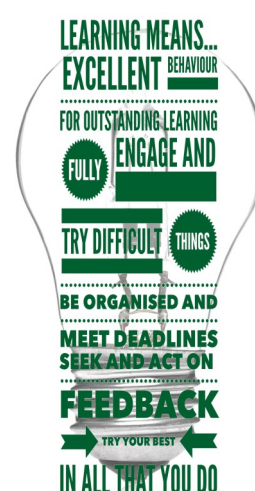
Head of House

Each year we appoint students from Year 12 and Year 13 as Head of House and Deputy Head of House. The application process is competitive and rigorous but the rewards for the successful candidates are numerous. It is an exciting opportunity to take on a senior leadership role in the school and be pivotal in leading their houses forward. This includes being a role model, organising house competitions, running assemblies, motivating others and leading the house captains from Year 7 – 11. This year our Head of House are **Shauna Throssell** for **Apollo** and **Katie Ellis** for **Poseidon**.



We expect all students to follow our Core Values

My name is Courtney Duncan. Being Head of House at KRS has given me the opportunity to work with some of the most incredible people and practise my skills in a professional setting. It has been exceedingly rewarding as I have been able to help people in the school and work closely with the schools pupil leadership team to raise money for charities, organise school events and present assemblies. On receiving student comments and views on the school and the way they learn, we have been able to target any concerns they may have had and encourage them to use the schools core values of excellence, learning and leadership throughout the school day. As Heads of House we owe a great amount of appreciation to the staff at KRS for providing us with this opportunity and giving us the chance to develop ourselves as individuals, which will ultimately help us in the future. Being Head of House has been a wonderful experience and I hope our work inspires future Heads of Houses.



My name is Casey Day. I want to focus on getting the whole school active and raising money for charity with fun runs and team sports. The house system is a important value to the school as it brings us all together to compete with and against our mates like the KRS Football teams, Netball teams and creative writing. I wanted to bring everyone closer together and allow all years to work together and to push Apollo for the house cup win. Thanks to all the students and especially the staff for supporting us, and the other Head of House Courtney Duncan and our deputies Alex Ravoka and Tiber Ginn. I would encourage others to try for this role as it was a truly amazing experience.

Study Expectations for success

Studying in the Sixth Form is different to Years 10 and 11.

You will be expected to take a lot more responsibility for your own learning.

The demands of AS, A2 and Vocational courses are great. It is vital therefore that you are committed to your courses and prepared to meet our expectations.

You will be studying fewer subjects in smaller groups. You will also have study periods when you will be expected to do further work. This will be done in the Sixth Form Study Room. This room is supervised. For every hour of contact time in lessons you will be expected to do a **minimum** one hour of private study, either at home or in school. This study must be planned. There will always be work for you to do and it is important that you are organised and hard working. This should be your immediate target when you start in September.



Study Facilities

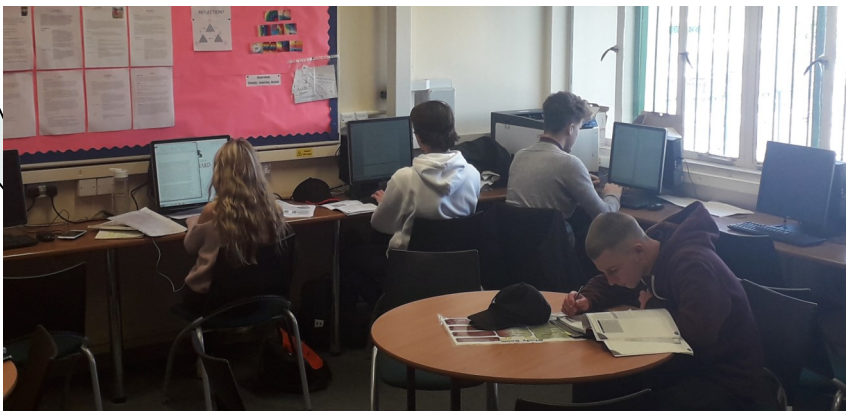
There are two quiet areas to go to for private study during your non-contact time. Your non-contact time will be used as “study periods”. During these periods you will go to the Sixth Form Study Room for private study that has been refurbished in 2016. This is a supervised study area that can offer you support in your chosen subjects. It is air-conditioned with full internet and school network facilities.

The school library is another area you can use for private study. The library is open throughout the school day and you can use it during some of your non-contact time.

You can borrow books as well as use reference books. Current newspapers and magazines are also available. It is also air-conditioned with full internet and school network provision.

Student Comment:

"The school allows Sixth Form students freedom to study during non-contact time. Facilities for studying are excellent."



Life in the Sixth Form



EXCELLENCE • LEARNING • LEADERSHIP

IPad 1 to 1 Program

At KRS we are committed to keeping up to date with modern trends and developments in education. Our school has campus-wide broadband Wi-Fi and all our full-time Sixth Form students receive their own iPad. To enhance their learning and to ensure all online resources are accessible. These devices are given on loan for the duration of their studies and are issued at the start of the academic year.



The Common Room



At break times you will have the opportunity to relax in our new and completely refurbished Sixth Form Common Room. Designed by current students, it has comfortable seating arrangements and kitchen facilities that will allow you to enjoy chatting with fellow students in a welcoming and friendly environment. We hope that you, along with your fellow students, will both enjoy and take pride in it.

Student Comment:

"There is a good atmosphere within the common room."

Student Comment:

There is a wide range off healthy but delicious snacks available, plus we get to jump to the front of the queue.

King Richie's Snack Bar

Our school day may be very different to what you have been used to. Our day starts at 8.00am and finishes at 2.00pm. We have two break times during the day in which school meals and snacks are available to buy. The school meal provision serves a wide range of delicious hot and cold food and cold drinks.



Life in the Sixth Form



EXCELLENCE • LEARNING • LEADERSHIP

Sixth Form Committee

Fortnightly meetings are held with all of the Sixth Form to discuss any issues or ideas. There is a committee chairperson for each year group and a secretary.

Sixth Form Social events

Sixth Form students are encouraged to organise social events together. This can include meals out and also activities such as The Escape Rooms, Bowling and Go-Karting.

Dress Code

Students in our 6th Form have chosen to continue their study with us and therefore, by default, agree to our 6th Form dress expectations. If students do not adhere to these expectations, they will be asked to return home to change, or parents will be asked to bring in a change of clothes.

The overall guiding principle is: dress and appearance should be appropriate for a work/business environment.



Attendance

Research shows that attendance is crucial if students are to be successful post-16. Because of this the Head of Sixth Form closely monitors attendance. You will therefore be expected to maintain an attendance rate in excess of 95%, unless there is a very good reason. We assume you are part of the Sixth Form to achieve excellence in learning.

Missed work

If the absence is known or the student is able to work they must contact their subject teachers and the Head of Sixth to request work. If the absence was unexpected or due to illness the student must on their return contact or see the relevant teachers to collect work and catch up as soon as possible.



Career Guidance

King Richard School is proud of its comprehensive individualised Careers Programme for Sixth Form students. The federation based Careers Adviser is an integral part of the school's Sixth Form and helps enable students to develop the knowledge and skills they need to make successful choices and manage transition. It aims to ensure all students achieve their full potential in whatever future career they choose to follow.

It is recognised that individualised guidance needs to be available at specific times of transition and education, and to this end, every Sixth Form student will be supported by individual careers interviews and careers education throughout their studies, as they move towards making decisions about university, gap year options or apprenticeships. An initial interview, in conjunction with the Head of Sixth Form following GCSE/BTEC results, ensures students and parents have an opportunity to fully explore the range of study options open to them. During the Autumn Term the Morrisby Psychometric Careers Profile is offered and funded for all Year 12 students. One to One interviews commence in the Spring Term with follow-up appointments as required. Parents are invited and encouraged to attend these interviews whenever possible.

In the summer term of Year 12 the students are supported with their UCAS applications to include advice on course choices, personal statements and finance. Help finding relevant work experience can also sometimes be arranged to strengthen a university application. In addition to these activities and whenever possible, ex-pupils are invited into school to talk to students about their jobs, careers and university courses to help give a real life perspective.

The careers library is well stocked and up-to date. It includes a wide range of resources covering apprenticeships, CV writing and interview skills, Further and Higher Education colleges and gap year options.

The Careers Adviser and Head of Sixth Form are available on Results Day to ensure students receive all the help and support to secure their university places.

Will you be applying to University?

You may not be sure if this is the route for you but it is worth considering as you're Level 3 (A Level and BTEC) subject choices can influence the university and the course available to you

The Russell Group universities have now published guidance on the subjects chosen at A level in a document named informed choices (www.russellgroup.ac.uk). They identify the facilitating subjects, which they argue provide a student with more options especially if you wish to study at a Russell Group university.

In addition, the Extended Project Qualification (EPQ), offered at the end of Year 12, is also highly regarded by many universities with some providing a lower offer to students who have a good grade in the EPQ.

Remember, many subjects and courses may require specific subjects at A level too, including medicine, music and art, so ensure your subject choices are the right ones for you and your future.



Designing your Future

As part of the Year 12 programme we visit the HE convention in Nicosia in the Autumn term to provide a first opportunity to consider Higher Education. Surrey and Sussex University present information about course selection, students finance and how to compare universities.

In the Spring Term, students are offered the opportunity to consider their futures post Sixth Form. This involves staying in Manchester city centre with a timetable of valuable activities including attendance at a HE fair with most UK universities represented; a range of university visits meeting students and viewing the facilities; talks about a successful gap year and careers in the military along with industry based visits to learn about careers and higher level apprenticeships.

In addition to the career focused element of the visit, life skills are developed as students live on a budget, plan and use public transport and explore the differences of living independently in the UK.



Student Comment:

"The visit for me was amazing, I loved a lot of things and I found it all very interesting, even though there was some parts i just did not like at all. The experiences were very good and I learnt a lot of new skills and qualities of being independent and the information was so detailed that I could explain it all again if i had to." "Personally, I found out a lot of information and have changed my mind about the kind of uni I want to attend. I enjoyed the trip and learned many skills and a lot of information about universities and the courses I would like to do."

Mentor System

When you enter the Sixth Form as a full time student you will be assigned a mentor . Your mentor is your first point of contact should you have any issues you wish to discuss. You will have a tutor period of fifteen minutes at the start of the day, three mornings a week. As well as mentoring individual students during this time, the mentors will also develop discussions on particular personal, social and moral issues with the group as a whole and you will follow a structured tutor programme. With this regular contact it is hoped that you will develop a positive relationship with your tutor.





As a parent, what communication should you expect from school?

- Your son/daughter will have an initial settling in period in both Year 12 and 13. Before the October half-term you will receive a settling in review where teachers comment on how well he/she is coping with their courses. Part of this review will also inform you of some important predictive data. This review will then be used as a basis for a meeting with your son/daughter's form tutor where you can discuss any issues arising.
- For students who may be struggling in certain areas, there maybe a further review period. At the end of this period, and if little progress has been seen, you may be invited to come into school to discuss possible options.
- The school operates a "Tracking System" within the Sixth Form where students are assessed against predicted data. This is done to monitor progress. You will receive information every term showing the current progress your son/daughter is making compared to this predicted data. Where students appear to be underperforming, intervention strategies will be put in place to support them with their learning and progress. You will be asked to be part of this process.
- In February you will receive a mid-year report, which will provide the basis of discussion at a Parents' Consultation Afternoon.

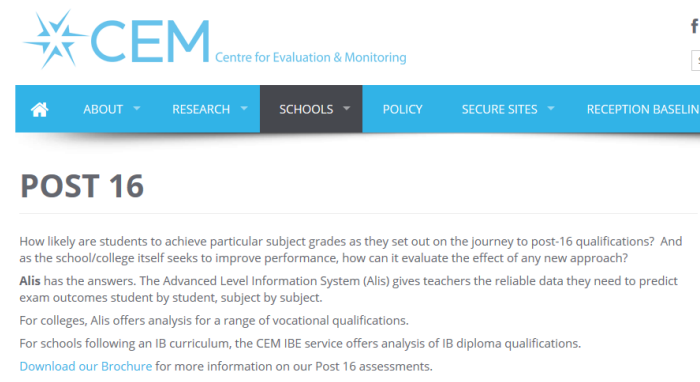
The school website www.kingrichardschoolcyprus.com, Twitter feed @KRSCyprus and Facebook Page King Richard School, Cyprus are all current and will provide you with information on a regular basis.

Target Setting

All Students are tested at the start of Year 12 using the CEM centre ALIS test <http://www.cem.org/post-16>. This is a predictive test and helps us to set challenging targets for all of our Sixth Form students.

KRS operates a system of regular assessment where students can discuss their progress with their teacher, tutor, learning mentor or the Head of Sixth Form. From these discussions students can:

- Set short term personal targets
- Discuss and agree upon challenging yet achievable target grades
- Compare their progress with predicted data
- Respond to feedback by improving their work or their approach to learning
- Personalise their timetable in response to subject pressures at different times





One key change that has been made under the new UCAS Tariff is to the points allocated to the AS qualification. Under the current tariff it has points worth 50% of an A Level but under the new tariff it is allocated points worth 40% of an A level.

UCAS points for University Entrance in 2020

GCE

Grade	A level	EPQ	AS
A*	56	28	N/A
A	48	24	20
B	40	20	16
C	32	16	12
D	24	12	10
E	16	8	6

Other qualifications

Subsidiary Sport Cambridge Technicals ICT		Certificate Engineering & Hospitality	
D*	56	D*	28
D	48	D	24
M	32	M	16
P	16	P	8

1. **Not all qualifications attract UCAS tariff points for various reasons.** The university or college you're interested in may accept your qualifications as an appropriate entry route even if they don't attract UCAS tariff points.
2. **Not all universities and colleges use the UCAS tariff.** Most prefer to express their entry requirements and make offers in terms of qualifications and grades rather than in tariff points. Around one third of course entry requirements make reference to the tariff.
3. **Tariff points are generally only counted for the highest level of achievement in a subject.** This means that you can't usually count AS levels if you have the full A level in the same subject.

Options: Subject Index



EXCELLENCE • LEARNING • LEADERSHIP

<u>Subject</u>	<u>Page</u>
Art and Design	13
Biology	14
BTEC National in Business	15
Chemistry	16
Certificate of Personal Effectiveness	17
English Literature	18
French & Spanish	19
Geography	20
BTEC Health & Social care	21
History	22
ICT (Cambridge Technicals)	23
Mathematics	24
Further Mathematics	25
BTEC Level 3 Subsidiary Dip in Music	26
A Level Music	27
BTEC Level 3 Performing Arts	28
Physics	29
Design & Technology	30
BTEC Diploma in Public Services	31
Religious Studies	32
BTEC Sport	33
Textile Design	34

While we endeavour to provide as broad a curriculum as possible, not all courses listed will run every year. This can be for a variety of reasons including staffing levels, student numbers and timetabling issues. As such, we can not guarantee any students a place on any course and an early conversation with the sixth form team is recommended before any firm decisions are made.



A Level Art & Design AQA



EXCELLENCE • LEARNING • LEADERSHIP

Who should consider studying this course?

If you are considering studying an Art & Design degree at University you will need A Level Art.

The A Level course

Have you ever wondered why so many creative people are successful in many different walks of life?

Creativity isn't only about pursuing artistic interests; it can also open the door to exciting career opportunities.

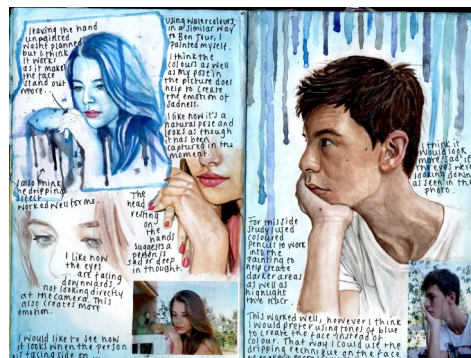
This A Level course is flexible and stimulates creativity, offering a high degree of choice and a range of different media, processes and techniques. It gives students the opportunity to produce a portfolio of work that they can show to prospective employers or use to secure a place in higher education.

The AQA A Level Art & Design course is delivered over two years and consists of a coursework unit and an examination unit. The units require students to develop their ability to show a range of skills including:

- Independence of mind in developing their own ideas
- An interest and enthusiasm for art and design
- The experience of working with a range of media including traditional and new media and technologies
- An awareness of different roles, functions, audiences and consumers of art and design practice.

The coursework unit is delivered through a number of assignments over the two years and accounts for 60% of the A Level qualification.

The examination unit is a 15 hour exam, which is an externally set task by AQA and accounts for 40% of the A Level qualification. It is marked by the school and moderated by AQA.



Student Comment:

"There is a calm, relaxed but focused atmosphere in the art room that allows us to work creatively and independently, whilst still receiving help and guidance"

Frequently asked questions and future careers

How will the work be assessed?

All work is internally marked and externally moderated by an Edexcel visiting moderator to the centre.

What can studying Art at A Level lead to?

You can go on to study Art & Design at Foundation Diploma level after A Level. This in turn can lead on to a BA (Hons) in your chosen discipline area.

What career can I do with an Art degree?

There are a myriad of careers in the Creative Arts industry, such as: Art Historian, Art Critic, Arts Administrator, Fashion Designer, Costume Designer, Advertising Director, Sign Writer, Packaging Director, Stage Designer, Advertising Photographer, Photo Journalist, Animator, Concept Artist, Art Teacher... and many more.

For more information contact: Mr Westall
mwestall@kingirchardschoolcyprus.com



Who should consider studying this course?

People who enjoy Biology at GCSE. You should have achieved at least a 'B' grade for Science GCSE and be predicted at least a 'B' grade. If you enjoy doing practical experiments that will be a distinct advantage.

What units are studied and how are they assessed?

The course covers eight themes and a science practical endorsement.

- Topic 1: Lifestyle, Health and Risk
- Topic 2: Genes and Health
- Topic 3: Voice of the genome
- Topic 4: Biodiversity and Natural Resources
- Topic 5: On the wild side
- Topic 6: Immunity, Infection and Forensics
- Topic 7: Run for your life
- Topic 8: Grey matter

The Advanced Subsidiary is the first half of the GCE qualification and assesses topics 1-4. The full advanced GCE qualification is assessed separately through three two-hour written papers and a separate practical science endorsement. Papers include multiple-choice, short open, open-response, calculations and extended writing questions with at least 10% of the marks awarded for mathematics. There is less emphasis on recall and more on understanding and application.



Student Comment:

"The Biology department at KRS is a well-resourced, supportive learning environment where students' knowledge of Biology can develop innovative ways of researching and experimenting. The lessons are always engaging and the staff are very enthusiastic about their subject. As a student, I am inspired to challenge myself in order to reach my full potential."

Frequently asked questions and future careers

Biology is a natural fit with the science and health sectors and provides wide-ranging skills including communication and problem solving. Around 1 in 10 biology graduates work as laboratory technicians, biochemists and medical scientists.

Biology-related jobs are particularly competitive, so it is valuable, and sometimes crucial, to gain practical experience in the field. This demonstrates your commitment to the career area and knowledge of what is involved. At KRS you will have the opportunity to supplement your Biology training with an Extended Project qualification based on a topic of interest for an in-depth study.

Students should preferably achieve a 'C' or above in Science or additional Science in GCSE. You need a basic understanding of Chemistry, Physics and Mathematics.

For more information contact Mr Reid:
sreid@kingrichardschoolcyprus.com



Why should you consider studying this course?

- Coursework projects in most units
- Develops business and management skills
- Well regarded by employers
- Good progression to university
- Develops IT and communication skills

The BTEC National in Business motivates learners via applied learning and assessment. BTEC qualifications are recognised by employers and universities and provide a progression route to more advanced qualifications eg degrees. We are looking for students who expect to gain at least 5 GCSEs at grade 4, including Maths and English, and who are interested in the world of Business.

What units are studied and how are they assessed?

We will study

- Exploring Business
- Developing a Marketing Campaign
- Managing Business Events
- Personal and Business Finance
- Recruitment and Selection
- International Business
- Principles of Management
- Creative Promotion

Student Comment:

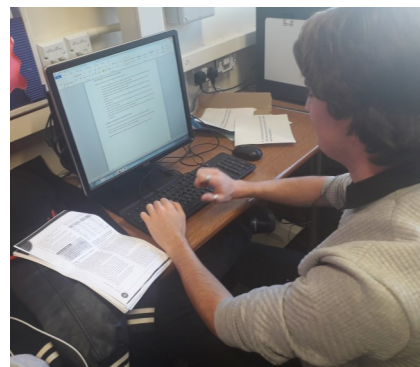
The best thing about this course it is teaches you real life skills based around finances. The marketing modules were particularly interesting.

Assessment

Assessment is achieved through coursework projects and through external assessment. External assessment includes examinations in Finance and Marketing and through externally set and marked projects. All subjects are individually graded as pass, merit or distinction. The points total at the end of your

Frequently asked questions and future careers

- *What can this course lead to?*
Students who study business often go on to university to study subjects as diverse as Law, Accountancy, Business, Teaching, Nursing, Economics and Geography. students find employment opportunities within banking, accountancy, engineering, insurance etc.
- I am not sure what I want to do, why should I study Business studies? This exciting qualification provides real choice. The Extended Certificate is the equivalent of one A level. Some units are assessed through coursework, some through external exams. We study the theories and techniques used in modern business management. We prepare students for employment in management and for degree level study.



**For more information contact Mrs Vause:
kvause@kingrichardschoolcyprus.com**

AS & A Level Chemistry

AQA 7404 and 7405



EXCELLENCE • LEARNING • LEADERSHIP

Who should consider studying this course?

People who enjoy Chemistry at GCSE. You should have achieved at least level 7 for Science at GCSE and be predicted at least a level 7 for additional Science or the Chemistry components of triple Science. If you enjoy doing practical experiments that will be a distinct advantage.

What units are studied and how are they assessed?

Physical Chemistry

At AS level we study the mole, amount of substance, energetics, kinetics, chemical equilibria and Le Chatelier's principle and redox equations. In the second year we study thermodynamics, rate equations, the equilibrium constant, electrochemistry and acids and bases.

Organic Chemistry

For AS we study basic Organic Chemistry, the alkanes, halogenoalkanes, alkenes, alcohols and organic analysis. In the second year we go on to study optical isomerism, aldehydes and ketones and carboxylic acids and their derivatives.

Inorganic Chemistry

At AS we study periodicity, the alkaline earth metals and the halogens. In the second year we study period 3 elements and their oxides, the transition metals and ions in aqueous solution.

Assessment

There are three exams at the end of the two years for A-level, all of which are two hours long. At least 15% of the exams for A Level Chemistry are based on 12 Core Practical experiments done throughout the course. The AS has two exams at the end of the year. Both are 1 hour 30 minutes long. There will also be approximately 20% calculations and numeracy content in all exams.



Student Comment:

"A-level Chemistry is very challenging but incredibly rewarding. You get to develop maths and practical skills and the teaching is excellent!"

Frequently asked questions and future careers

- *What grades do I need at GCSE?* At least a B in GCSE Sciences and a B or above in Mathematics would be advantageous.
- I am not sure what I want to do, why should I study Chemistry? Chemistry is one of the most respected A levels and develops essential skills like logical analytical thinking, practical skills, report writing, numeracy and literacy and many more.
- *Do I need a Chemistry A level?* Potential careers include analytical chemist, chemical engineer, Doctor, Nurse, Forensic Scientist, vet etc. More details can be found at <http://www.futuremorph.org/14-16/next-steps/follow-your-favourite-subject/careers-from-chemistry/do-i-need-chemistry-to/>.

**For more information contact Mr Reid:
sreid@kingrichardschoolcyprus.com**

The Certificate of Personal Effectiveness Level 3 (CoPE)



EXCELLENCE • LEARNING • LEADERSHIP

Who should consider studying this course?

CoPE Level 3 is primarily intended for students in post-16 education, helping them to build the skills they will need as they prepare for future study or work. CoPE Level 3 is worth 16 UCAS points for students entering higher education in 2017 (comparable to a B grade at AS Level).

What units are studied and how are they assessed?

The Certificate of Personal Effectiveness (CoPE) is a substantial, nationally recognised Level 3 qualification in skills development. It enables students to practise, develop and demonstrate six important skills that are required for success in higher education, training or employment:

Teamwork

In this module, students will learn how to work as part of a team, agreeing on objectives and working arrangements. Maintain ways of working co-operatively and review ways for the team to improve in the future. This will work in conjunction with CMI level 2 qualification as part of Sixth Form enrichment activities.

Problem solving

Students will have the opportunity to explore problems and compare different ways of solving them by completing modules on Global Awareness, Career Planning and Active Citizen. This will work in conjunction with Extended Project Qualification as part of Sixth Form enrichment activities.

Discussion

Students will need to show by completing modules that they can make clear and relevant contribution to discussions. Listen and respond sensitively to others and develop ideas. Create opportunities for others to contribute to projects and the team.

Research

Select a module of interest for further independent research. Present and evaluate the findings and communicate them to an audience.

Oral presentation

This qualification will prepare students for future employment providing them with skills in presentation styles to suit different situations. They will also learn to engage audiences with language that suits the situation and purpose

Active Citizen

Students will work on a project that improves the quality of life of other individuals or groups. It includes projects that promote behaviour that is more responsible or build community cohesion.



Student Comment:

"I think that ASDAN CoPE is one of the most helpful courses I have ever done. I learnt how to set targets and plan for my future".

**For more information contact Mr Balmer:
cbalmer@kingrichardschoolcyprus.com**

AS & A Level English Literature

AQA B English Literature



EXCELLENCE • LEARNING • LEADERSHIP

Who should consider studying this course?

English Literature students are engaged with the world around them: they question, they explore, they discuss. Good literature students enjoy reading, film, history, and current affairs. For students who engaged with the depth and detail of English GCSE study, this is the course for them: GCSE B grade or above (in Literature or Language) is preferred but enthusiasm for reading will be considered on an individual basis.

What units are studied and how are they assessed?

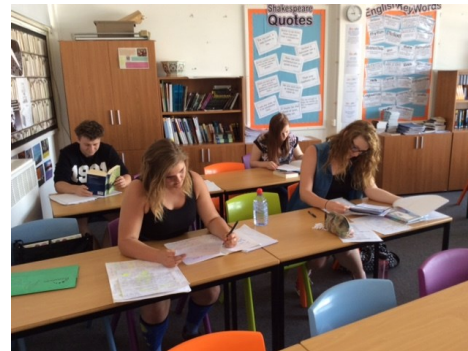
The new AS and A Level are mostly assessed by exam. A2 students complete all their exams (for both Y12 and Y13 study) at the end of Year 13.

For the A2, students study a wide range of: Shakespeare, modern drama, modern prose and traditional and modern poetry.

In Y12, the focus is on genre (either tragedy or comedy) and in Y13 there is the opportunity to study classic texts related to political and social writing or crime.

Assessment is by two exams, each worth 40% of the final grade. Each exam explores readings and interpretations of three texts (so six texts in total).

Finally, in Y13 students produce two coursework projects engaging with critical theory and/or applying a more creative approach by producing texts within a literary genre.



Student Comment:

"English Literature is a subject that is not only extremely interesting, but also fun."

Brett, Year 12

"English enabled me to access parts of my conscious that would have previously been lost and forgotten."

Frequently asked questions and future careers

We encourage all students to opt for the full A2, and we can discuss individual requests to follow the one-year AS study. If completing the AS, students sit two exams at the end of Y12 with a focus on a literary genre: either tragedy or comedy. The texts range from classical drama such as Shakespeare, through to more modern writers such as Fitzgerald and McEwan.

English Literature is seen as a 'traditional' academic subject, therefore the A Level is respected and valued globally. English Literature is warmly welcomed by university and college courses which draw on communication and interpretation skills: law, history, politics, philosophy, psychology, theology, sociology, art and other design-related subjects. Further, because advanced study in English develops and refines your discussion, composition and interpretative skills, it lends itself very well to careers in marketing, media, business, law and education.

For more information contact Mr Purdie:
jpurdie@kingrichardschoolcyprus.com



Who should consider studying this course?

This course is most suitable for those who have achieved Grade 7-9 in GCSE French or Spanish.

What units are studied and how are they assessed?

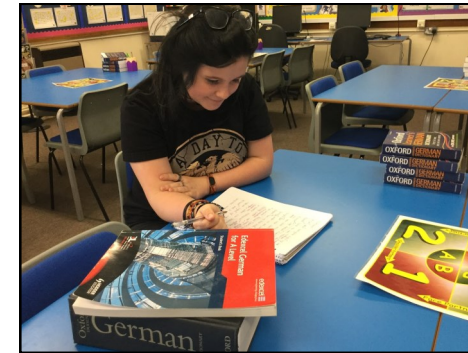
A-Level Topics include:

- Family and Relationships
- Education and Employment
- Music
- Media and Technology
- Customs and Traditions
- Grammar
- Literary texts and films (1 novel, 1 film)
- Historical Events

Assessment:

At the end of Year 13 students will do the following exams:

- Paper 1: Listening, Reading and Writing Exam (2 hours), 40% of A-Level.
- Paper 2: Writing Exam (2 hours 40 minutes), 30% of A-Level.
- Paper 3: Speaking Exam, conducted by class teacher (21-23 minutes, including 5 minutes preparation time), 30% of A-Level.



Frequently Asked Questions and Future Careers

What are the aims of the course?

To develop students' enthusiasm for language learning, promote cultural awareness and produce effective communicators in the target language.

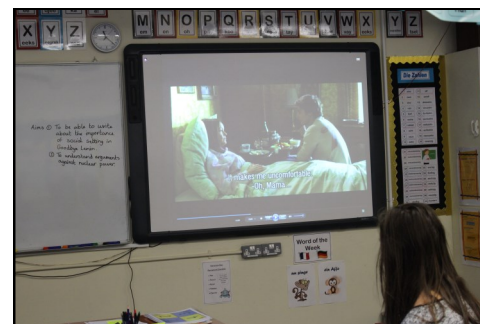
What are the benefits of learning a foreign language?

Not only will language skills increase your enjoyment of holidays abroad, you will improve your employability. There are a wide range of career opportunities for those who have studied languages.

For example?

Translating	Interpreting
Armed Forces	Teaching
Retail and Wholesale	Journalism & media
Health & Social Work	Diplomatic Service
Engineering	Travel and Tourism

In fact, practically *any* profession could involve languages!



Student Comment:

"A-level languages are very interesting because they allow you to develop your knowledge of the language in much more depth than at GCSE and they also help to increase your cultural awareness. My favourite topic so far has been music."

For more information contact Miss A Hill:
ahill@kingrichardschoolcyprus.org



Who should consider studying this course?

It is recommended that you have obtained at least a level 7 at GCSE to study Geography. You should have an independent, lively and enquiring mind, an interest in the environment and current affairs, a willingness to explore new ideas and an ability to communicate your ideas effectively and a 'hands-on', enthusiastic approach to the subject.

What units are studied and how are they assessed?

Unit 1: Physical Systems

1 hour 45 minute exam (24%)

Landscape Systems - Coastal, Glacial or Dry (2 of 3)

Earth Life Support Systems – Water and Carbon cycles

Geographical Skills

Unit 2: Human Interactions

1 hour 45 minute exam (24%)

Changing Spaces; Making Places - From local to global scales

Global Connections -Trade or Migration and Human Rights or Power and Borders

Geographical Skills

Unit 3: Geographical Debates

2½ hour exam (32%)

Study 2 of 5

Climate Change, Disease Dilemmas, Exploring Oceans, Future of Food and Hazardous Earth.

Unit 4: Geographical Independent Investigation

3,000-4,000 word report (20%)



Student Comment:

"My two years of studying geography at KRS have been interesting and insightful. The field-work aspects are always engaging and memorable. I would strongly recommend taking A level geography"

Frequently asked questions and future careers

How much work will I need to do?

Regular homework will be set including report writing, reading and research. In addition, as an independent learner it is expected that you will keep up to date with current affairs.

Do we do fieldwork?

Year 12 includes a residential to Wales in addition to day visits. 4 days worth of field experience are now a compulsory element of the course.

Where do all the Geographers' go?

Geography graduates were surveyed after their degree courses about their career destinations. The results show:
40.6% went into management & administration
24.8% did further training, including PGCE
11.4% joined the financial sector
10.4% joined the retail sector
10% joined other professions, including the media.

(Source AGCAS)

For more information contact: Mrs Vause
kvause@kingrichardschoolcyprus.com



Who should consider studying this course?

Students who are considering a career in health care, social care or education and enjoy working as part of a team. Students should have at least a level 5 in English and 5 GCSEs level 5-9.

What units are studied and how are they assessed?

The units studied include:

Unit 1 – Human Lifespan Development – A study of the physical, intellectual, emotional and sociological changes humans experience over their lifetime (mandatory unit, externally assessed exam)

Unit 2 – Working in Health and Social Care – An exploration of what it is like to work in the health and social care sector, looking at the roles, responsibilities and organisational structures of care settings ((mandatory unit, externally assessed exam)

Unit 5– Meeting Individual Needs in Health and Social Care – Researching the principles and practicalities that underpin meeting an individual’s care and support needs which are the foundation of all the care disciplines (mandatory unit, internally assessed project work)

Unit 10– Sociological Perspectives – Developing an understanding of the application of sociological approaches to health and social care including the study of demographics and the concept of an social inequality, considering links between the two and the health and wellbeing of the population (optional unit, internally assessed project work)



Student Comment:
“Health and Social Care has given me an opportunity to learn about a real working environment, with a focus on independent learning that will help me in the future.”

Frequently asked questions and future careers

Does this subject require work experience?

No, although previous experience, including voluntary work, in a health and/or social care setting would be useful for students

How often will I be assessed?

The assessment is rigorous, with 58% of the work exam based and the remaining 42% requiring the student to build up a portfolio of assignments and evidence, both written and recorded on photograph and video, that demonstrate their knowledge and understanding of the skills and theories associated with the Health and Social Care Sector

What career can this course lead to?

This can support a career in many sectors. This may include healthcare, social work, education, management and other communication-based careers such as sales, marketing and policing

For more information contact: Mr Downham
jdownham@kingrichardschoolcyprus.com



Who should consider studying this course?

If you are considering studying History, a social science or Law, then History is very useful.

What units are studied and how are they assessed?

The new A-level course is divided into three units

Paper 1

Anglo-Saxons and Norman England

1 hour 30 minutes paper

25% total A Level

Paper 2 - The Cold War in Europe 1941–1995

1 hour 30 minutes paper

15% total A level

Paper 3 Russia and its Rulers 1855–1964

2 hour 30 minute paper

40% of total A Level

Paper 4– Coursework – Nazi Germany

3000-4000 word essay

20% of total A level



Frequently asked questions and future careers

How will the work be assessed?

Assessment is by external examination at the end of the two year course.

What can studying History at A Level lead to?

The transferrable skills intrinsic in the study of History mean that it has uses in many fields. Obviously further study in History is available as well as opportunities to study a number of further subjects including politics and law.

What career can I do with a History degree?

This could include historian, careers in education, civil service, accounting, lawyer, politics, curator, journalism.

Student Comment:

“Studying history at this school allows you to enter a world of complexity, curiosity and excitement. Each lesson increases my enthusiasm for the subject.”

For more information contact: Mr Hill
shill@kingrichardschoolcyprus.com



Who should consider studying this course?

Those pupils who wish to prepare for further learning or training or to develop the essential knowledge of IT in the real world. If you prefer to learn in a way that's practical and work-related, then Cambridge Technicals are ideal. The great thing about them is that they keep your options open – so if you're not fully convinced that a vocational way of learning is right for you, Cambridge Technicals keep the door open for a move to higher education further down the line.

What units are studied and how are they assessed?

These qualifications and units are in the Qualifications and Credit Framework (QCF). They have been structured to enable learners to gain qualifications at their own pace and build on their achievements and they deliver UCAS points.

The course consists of 6 equally weighted units, with 2 mandatory Units on the use of Information and over 40 optional units available including hardware, software and online options. All units include practical activities that prepare you for the world of work.



What does this Qualification Offer?

Cambridge Technicals offer a variety of options:

Core units – give a solid foundation for the other units

Business – explores the ICT needs of businesses and provides learners with transferable skills necessary for the workplace or as they progress to further study

Creative – lets learners express their creative side with units focusing on multimedia components, the power of digital imagery or creating a dynamic product using sound and vision

Technical – explores programming, evaluating different hardware, software and networks, and developing control systems (creating a system for a robot or model car),

Understanding technology, 'a project approach' – if you'd like to explore a theme further or pick up on a subject not included, this unit is ideal. It's a learner-initiated project that explores any subject in ICT in which you may have a particular interest. You'll plan, manage and review your own project – it's problem solving at its best.

"Each unit we do is intriguing, I learn something new every lesson. Before I started this course I barely knew much about computers or their uses. Now I know a lot more and hope to carry on computing in university."



For more information contact Mr Murphy at rmurphy@kingrichardschoolcyprus.com

AS & A Level Mathematics

Edexcel Level 3



EXCELLENCE • LEARNING • LEADERSHIP

Who should consider studying this course?

A level Mathematics is quite different to GCSE. Students need to be able to deal with a high level of abstraction and a facility with algebraic techniques is essential.

The entry level for this course is a GCSE level 6, although we would prefer a level 7 or higher as those with a level 6 tend to find this course challenging.

What units are studied and how are they assessed?

The AS and the A Level courses are two separate qualifications, so the results from the AS examinations will not be counted as part of the A Level marks.

AS Mathematics consists of 2 papers:

Pure Mathematics (67%) 2 hours, 100 marks
Statistics and Mechanics (33%) 1 hour, 50 marks

A Level Mathematics consists of 3 papers:

Pure Mathematics 1 (33%) 2 hours, 100marks
Pure Mathematics 2 (33%) 2 hours, 100marks
Statistics and Mechanics (33%) 2 hours, 100marks



The Pure Mathematics modules build on the work you will have met at GCSE and extend topics such as algebra and trigonometry, as well as introducing calculus which enables us to study curves in greater detail.

Mechanics includes such topics as vectors, acceleration, velocity, distance, Newton's Laws and projectiles.

Statistics extends the topics of data presentation, probability and sampling methods.



Frequently asked questions and future careers

Mathematics opens up a wide range of possibilities, both in terms of courses using, or depending upon Mathematics at university, and in terms of career prospects. Mathematics at A level opens the door to many opportunities.

Anyone intending to take Mathematics, Physics or Engineering at a higher level will find this qualification essential for acceptance.

Student Comment:

"I enjoy the satisfaction of completing a really difficult mathematics problem and seeing that I got everything correct."

For more information contact: Mr Peters
speters@kingrichardschoolcyprus.com

AS & A Level Further Mathematics

Edexcel Level 3



EXCELLENCE • LEARNING • LEADERSHIP

Who should consider studying this course?

Students must have at least an level 8 at GCSE (ideally level 9) and have chosen to study Mathematics A level. Please also note that Further Mathematics is a course for able and committed mathematicians. You must be prepared to have a significant part of your 6th Form timetable devoted to mathematics. People who study Further Maths should enjoy mathematics for its own sake.

What units are studied and how are they assessed?

Further Mathematics is an A Level in its own right. Although some of the maths you would study is complex and demanding, generally Further Maths means “More Maths” and not necessarily “Harder Maths”. Further Maths A Level is an opportunity to deepen your knowledge and understanding of topics you are already familiar with as well as an opportunity to study different areas of Mathematical importance.

The most likely modules would be:

Y12 Further Pure Mathematics 1 (written examination 1 hr 30 min. 50%, 75 marks)

Y12 Decision Mathematics (written examination 1 hr 30 min. 50%, 75 marks)

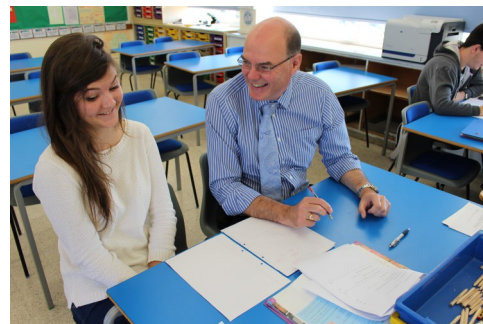
Yet again this AS course is a stand-alone qualification and does not contribute to the A2 qualification.

Y13 Further Pure Mathematics 1 (written examination 1 hr 30 min. 25%, 75 marks)

Y13 Further Pure Mathematics 2 (written examination 1 hr 30 min. 25%, 75 marks)

Y13 Further Statistics 1 (written examination 1 hr 30 min. 25%, 75 marks)

Y13 Further Decision 1 or Further Mechanics 1 (written examination 1 hr 30 min. 25%, 75 marks)



Frequently asked questions and future careers

The combination of Mathematics and Further Mathematics is excellent preparation for many future courses and careers. Such a demanding and logical discipline as mathematics, studied in such depth, supports all forms of engineering, physics, analytical work in business and industry, as well as courses in Law, philosophy, economics and finance. If you are considering a degree in mathematics or a related subject, or are considering applying to Oxford, Cambridge or Imperial College to study a mathematical discipline then a qualification in Further Mathematics will be a real advantage. Certain high-demand courses at other universities (in subjects such as engineering) will also prefer students who have studied Further Mathematics.

Student Comment:

“This is a very demanding course, especially the time I have to put in to it to cover all the modules.”

For more information contact: Mr Peters
speters@kingrichardschoolcyprus.com



Who should consider studying this course? Students who are interested in developing their music performance and/or music technology skills and who wish to learn about the different areas of the music industry.

What units are studied and how are they assessed?

Subsidiary Diploma

Over two years you will study 6 units. These units are:

Music (Performing)

- Music Performance Techniques
- Solo Performance Skills
- Working and Developing as a Musical Ensemble
- Special Subject Investigation
- Marketing and Promotion in the Music Industry
- Music Project

There are no external exams for the course. All work is marked and moderated internally and sent for moderation with the exam board. There is the possibility of completing further units.



Student Comment:

“The Music Department has lots of facilities for students to be able to develop their Music or Music Technology skills including a iMacs and a recording studio.”

Frequently asked questions and future careers

Will there be performance opportunities?

There are many opportunities for performances throughout the school year, from performing in assemblies to the Spring Concert and Summer Music Recital.

How is BTEC Music work marked?

You will be graded a Pass, Merit or Distinction for each piece of work you submit. You will get an overall Pass, Merit or Distinction grade for the BTEC.

What can studying BTEC Music lead to?

Previous KRS students have gone on to university to study Music and Music Technology. It also is useful for careers in the music industry or performing arts.

For more information contact: Mr Greenwell
jgreenwell@kingrichardschoolcyprus



Who should consider studying this course?

Students will listen to, discuss and analyse a wide range of music. They will also participate in practical lessons involving composing and performing. Students are encouraged to develop musical skills in the classroom and to extend their skills outside. Most are experienced performing musicians who want the opportunity to extend their expertise on their chosen instrument, develop an understanding of how music is created and enhance their composing and analysing.

What units are studied and how are they assessed?

Component 1: Performing 30% of the qualification.

A performance of one or more pieces, performed as a recital.

Performance can be playing or singing solo, in an ensemble, improvising, or realising music using music technology.

The total performance time across all pieces must be a minimum of eight minutes.

Component 2: Composing 30% of the qualification.

Total of two compositions, one to a brief set by Pearson and one either free composition or also to a brief.

One composition must be from either a list of briefs related to the areas of study, or a free composition, carrying 40 marks for this component. This composition must be at least four minutes in duration.

One composition must be from a list of briefs assessing compositional technique, carrying 20 marks for this component. This composition must be at least one minute in duration, unless the brief specifies a longer minimum duration.

Component 3: Appraising Written exam worth 40% of the qualification.

Knowledge and understanding of musical elements, contexts and language.

Application of knowledge through the context of six areas of study, each with three set works.

Application of knowledge to unfamiliar works.

One written paper of 2 hours in length.

Frequently asked questions and future careers

Fieldwork/cost incurred

Students are expected to have instrumental lessons and play in at least one extra-curricular group.

Pre-course considerations

If anyone wishes to study at A level without having studied GCSE music, good practical skills to at least grade 5 and a pass at grade 5 theory are desirable.

Future Careers

A Level Music is an obvious choice for anyone wishing to do a degree, diploma or teaching course in music. These courses can lead to qualifications in the teaching of music in school, peripatetic instrumental teaching, advanced instrumental coaching and research work in the musicological field. An A Level pass in music will also be useful for anyone contemplating a career in the arts administration, recording engineering or the music retail trade.

For more information contact: Mr Greenwell
jgreenwell@kingrichardschoolcyprus

BTEC Performing Arts

Edexcel Level 3



EXCELLENCE • LEARNING • LEADERSHIP

Who should consider studying this course? Students who are interested in developing their performance skills across the disciplines of drama, music and dance.

What units are studied and how are they assessed?

Subsidiary Diploma

Over two years you will study 6 units. These units are:

Core Units:

- Investigating Practitioners' Work
- Developing Skills and Techniques for Live Performance
- Group Performance Workshop Task
- Performing Arts in the Community

Optional Units include (choose two)

- Screen Acting
- Children's theatre
- Modern dance
- Choreography
- Musical theatre
- Singing techniques



There are no external exams for the course. All work is marked and moderated internally and sent for moderation with the exam board. There is the possibility of completing further units.

Frequently asked questions and future careers

Will there be performance opportunities?

The BTEC programme allows for many options: you could specialise in lighting design, stage design, costume, ballet or singing technique. The course builds on your existing skills and helps you develop as a professional practitioner.

How is BTEC work marked?

You will be graded a Pass, Merit or Distinction for each piece of work you submit. You will get an overall Pass, Merit or Distinction grade for the BTEC.

What can studying BTEC Performing Arts lead to?

Confidence, communication, awareness and self-discipline are all life skills which are highly prized in higher education and employment.



Student Comment:

"This course had stretched my skills and talents as a performer. It has given me a greater, richer understanding of the world of performance; as well as giving me the technical skills to stage events."

For more information contact either Miss Field
hfield@kingrichardschoolcyprus.com or Mr Greenwell
jgreenwell@kingrichardschoolcyprus.com



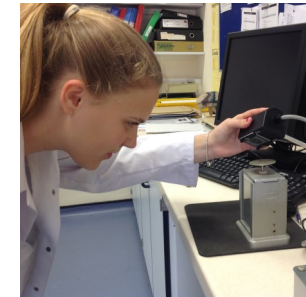
Who should consider studying this course?

Do you want a challenge? Do you want to be a critical thinker? Then Physics is for you. It is for people who enjoy Physics at GCSE. You should have achieved at least a level 7 for Science GCSE and be predicted at least a 'B' grade.

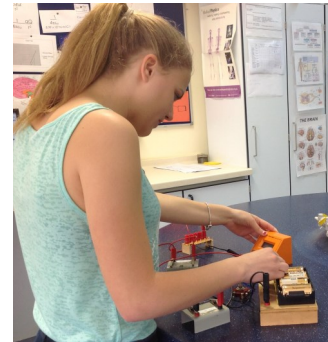
What units are studied and how are they assessed?

The course covers eight compulsory themes and a science practical endorsement:

- Concept-led approach
- Working as a Physicist
- Mechanics
- Electric Circuits
- Further Mechanics
- Electric and Magnetic Fields
- Nuclear and Particle Physics
- Materials
- Waves and the Particle Nature of Light
- Thermodynamics
- Space
- Nuclear Radiation
- Gravitational Fields
- Oscillations



Assessment is in the form of three exam papers. Paper 1 is 30%, Paper 2 is 30% and Paper 3 is 40%.



Frequently asked questions and future careers

A physics degree sets you up well for research-based roles and positions in other sciences, it is also useful for careers in business, finance, IT and engineering

Industries employing physicists are varied and include aerospace and defence, education, energy, engineering, instrumentation, manufacturing, oil and gas and science and telecommunications.

At KRS you will have the opportunity to supplement your Physics training with an Extended Project qualification based on a topic of interest for an in-depth study.

A-level physics builds on the concepts and skills developed in Physics GCSE and is particularly suitable for students who have the skills and knowledge associated with a GCSE Additional Science course or equivalent.

Student Comment:

"The Physics A-level course can be very challenging at times but with small classes help is always there."

For more information contact: Mr Reid
sreid@kingrichardschoolcyprus.com

A-level Design and Technology: Product Design AQA (7552)



EXCELLENCE • LEARNING • LEADERSHIP

Who should consider studying this course?

Are you creative as well as academic? Planning a career in engineering, construction, design or manufacturing? Do you want employability skills such as creativity, problem solving, planning, communication? Then Product Design is the course for you.

What units are studied and how are they assessed?

A Level Assessment

This is a 2 year lineal course with all of the assessment in the second year. The course has two main focus areas.

1. Technical Principles

- Characteristics of a wide range of materials including timber, polymers, metals and card
- Processing techniques for all the materials
- Industrial processing techniques
- The environment and design
- Use of modern technology in design and manufacture

2. Designing and Making Principles

- Design theory, movements and influences
- The design process
- Project management
- Selecting and using appropriate tools and equipment

Technical principles: how it's assessed:

Written exam: 2.5 hours, 120 marks, 30% of A-level

Questions: Mixture of short answer and extended response.

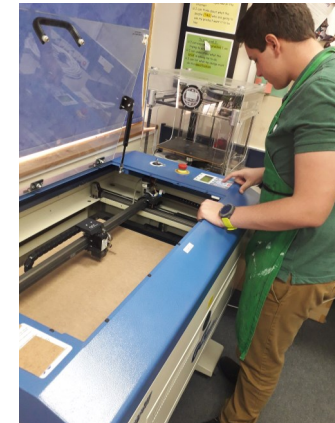
Designing and making principles: How it's assessed:

Written exam: 1.5 hours, 80 marks, 20% of A-level

Questions: Mixture of short answer and extended response questions.

Practical application of technical principles, designing and making principles.

How it's assessed: Substantial design and make project, 100 marks, 50% of A-level



Student Comment:

"I really like Product Design because it allows me to be creative and see my ideas come to life. I love the practical elements of the course and learning all about products and why they look like they do."

Frequently asked questions and future careers

1. Do I need to have a GCSE in DT?

It helps a lot if you have, but it would not preclude you from taking the course as long as you have some of the requisite skills.

2. Is there a lot of written work?

There is a requirement to submit a substantial portfolio that requires clear explanations of your design work. At A Level you will be expected to provide essay-style questions in the exam.

3. Do I need to be artistic?

You do need to be able to communicate your ideas graphically but we will give you strategies that will make this much easier to achieve.

For more information contact: Mr Balmer
cbalmer@kingrichardschoolcyprus.com

BTEC Diploma Public Services

Level 3 Subsidiary



EXCELLENCE • LEARNING • LEADERSHIP

Who should consider studying this course? Anyone who is considering a career in the armed forces, the police or any other area of public service, or is interested in how our public services are run or in undertaking a leadership role in their chosen career

What units are studied and how are they assessed?

Mandatory Units

Unit 1: Government, Policies and the Public Services (**Internal Assessment**)

Unit 2: Leadership and Teamwork in the Public Services (**Internal Assessment, including a practical assessment**)

Unit 3: Citizenship, Diversity and the Public Services (**Internal Assessment**)

Optional Units

Unit 4: Understanding Discipline in the Uniformed Public Services (**Internal Assessment, including a practical assessment**)

Unit 7: International Institutions and Human Rights (**Internal Assessment**)

Unit 8: Understand the Impact of War, Conflict and Terrorism on Public Services (**Internal Assessment**)



Student Comment: "The course gave me a good insight in to how public services operate and the wider impact on a national and international level. I enjoyed choosing areas of interest to re-search for my own assignments"

Frequently asked questions and future careers

- Q. What do the practical elements involve?
- A. This may include role play (recorded for evidence) and undertaking a range of leadership and teamwork tasks
- Q. How are the internally assessed assignments set out and marked?
- A. A series of written or practical assignments are set out with time scales given for their completion. These are initially marked internally then selected samples are sent off to be externally verified
- Q. What GCSEs do I need?
- A. A grade C or above in English. A good understanding of History and Geography would also be helpful

For more information contact : Mr Greenwell
jgreenwell@kingrichardschoolcyprus.com

A Level Religious Studies

WJEC Christianity and Ethics



EXCELLENCE • LEARNING • LEADERSHIP

Who should consider studying this course ?

Ideal for students who are interested in moral perspectives and exploring some of life's

What units are studied and how are they assessed?

At AS level (40%) we will study

- 1) An Introduction to the Study of Religion: Option A Christianity (15%)
- 2) An Introduction to Ethics and Philosophy of Religion: (25%)

In the second year (60%) we will study:

- 3) Advanced Study of Religion – Option A Christianity (20%)
- 4) Religion and Ethics - (20%)
- 5) Philosophy of Religion - (20%)



Frequently asked questions and future careers:

Religious studies graduates often go on to further career training and jobs in:

- Business / international business - marketing and management.
- Law, marketing and management.
- The government, foreign service, or the Peace Corps.
- Non-profit or non-governmental organizations.
- Counselling and social work.
- Education, journalism and media
- Journalism and news

Student Comment:

"Philosophy and Ethics is a great subject to take. You tackle current events and debates that are taking places around the world. Philosophy and Ethics is an amazing and enriching subject to study and I would recommend it to all."

For more information contact: Mrs Downham
cdownham@kingrichardschoolcyprus.com

Who should consider studying this course?

The award is suitable for students who enjoy sport but do not want to specialise totally in one area. You will need to have an enthusiasm for sport, although there is very little practical content, and an interest in the broader aspects of sport and leisure.

What units are studied and how are they assessed?

In the BTEC Subsidiary Diploma in Sport you will study 7 units, covering a range of topics. These will be:

Anatomy and Physiology - External Examination
Fitness Training and Programming for Health, Sport and Well-being - external written task
Professional Development in the Sports Industry - coursework
Sports Leadership - coursework
Application of Fitness Testing - coursework
Sports Psychology—coursework



Frequently asked questions and future careers

How will I be assessed?

You will be required to sit one external examination and one external written task. The remaining units will be coursework based. External assessment makes up 67% of the final marks. Projects are submitted for marking on a regular basis throughout the course. They are assessed internally by your teachers and then moderated by the board. Work is graded and written feedback provided enabling students to gauge how well they are doing on the course. Feedback will help you to see the strengths of your work, as well as allowing you to reflect on areas which can be developed further. Your work will be graded pass, merit or distinction.

What are the entry requirements?

Students studying a BTEC Subsidiary Diploma programme will have achieved 5 GCSEs and have achieved at least a Grade 5 in Maths and/or English. A GCSE level 5 or better in Science and PE would be a distinct advantage but not essential.



Student Comment:

BTEC Sport is an interesting course which covers a wide range of different sporting content. It involves a lot of theory and computer based work.

For more information contact: Mr Thomas
cthomas@kingrichardschoolcyprus.com

A Level Textiles Design

AQA



EXCELLENCE • LEARNING • LEADERSHIP

Who should consider studying this course?

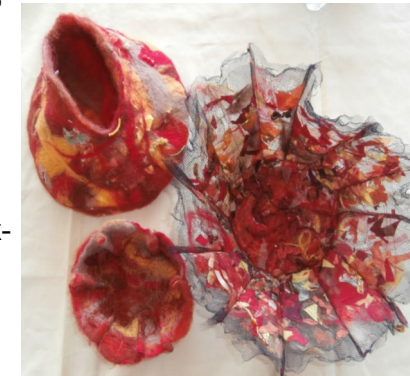
A Level Textile Design is a dynamic and exciting subject area that will appeal to students who are interested in textiles, fashion, costume and interiors. This course enables you to develop your creativity, whilst building a portfolio of work that will enable you develop your skills as a designer. General entry requirements are grade 5 or above: GCSE Textiles or GCSE Art.

What units are studied and how are they assessed?

Areas of Study: Candidates are required to work in **one or more** area(s) of Textile Design, They may explore overlapping areas and combinations of areas: fashion, printed and/or dyed fabric and materials, interior design, constructed textiles and textile installation.

Skills and Techniques: Candidates will be required to demonstrate skills in all of the following: awareness of the elements of Textile Design, such as shape, colour, texture, pattern, harmony, contrast and/or repetition, appreciation of the relationship of form and function and, where applicable, the constraints of working to a brief, understanding of a variety of textile methods, such as fabric printing (mono-printing, relief printing and/or screen printing), tie-dye, batik, spraying, transfer and fabric construction and stitching (appliqué, patchwork, padding, quilting and/or embroidery).

Knowledge and Understanding: Candidates must show knowledge and understanding of: how ideas, feelings and meanings can be conveyed and interpreted in images and artefacts, historical and contemporary influences and developments and different styles and genres, how images and artefacts relate to social, environmental, cultural and/or ethical contexts, and to the time and place in which they were created and the working vocabulary and specialist terminology which is relevant to their chosen area(s) of Textile Design



Student Comment:

I did GCSE textiles and wanted to carry on to do the A Level, as I absolutely love the subject and wanted to continue exploring creative techniques. The subject has exceeded my expectations.



Student Comment:

I wasn't sure if I would enjoy Textiles as I didn't take it at GCSE, but I really enjoy it. The work is very hands on. I've enjoyed trying something completely new its great if your creative.

Frequently asked questions and future careers

A Level Textiles combines effectively with other subject areas and enables students to apply for a range of degree subjects. There will be opportunities to specialise in this wide ranging subject area and students will have the chance to produce outcomes in an area that interests them.

Alternatively, students may consider direct entry into employment or further training.

Students choose to study Textile Design at A-level for many reasons. They may have a particular career path they wish to follow, such as Fashion Designer, Fashion Buyer, Textile Designer, Interior Designer, Fashion Magazine editor, Stylist, or any aspect of the creative industries. Many students choose A-level Textile Design because they enjoy the subject and it offers a welcome balance with their other A-level subjects.

For more information contact: Mrs Andrew
eandrew@kingrichardschoolcyprus.com

